









## Concentric

01. Source material  
in depth. A  
preferred for  
or 12 inch s

02. Prepare  
sandpaper in  
painters tap

03. Prepare  
and water.

04. Apply po  
proper drying  
sand between

05. Prepare  
proper dimer  
(with at lea  
line (from t  
for this mu



06. Photocop  
template for  
printout can  
Print on 14

\*One possibl

\*\*GOLDEN SE  
information

john ros, o

ity.

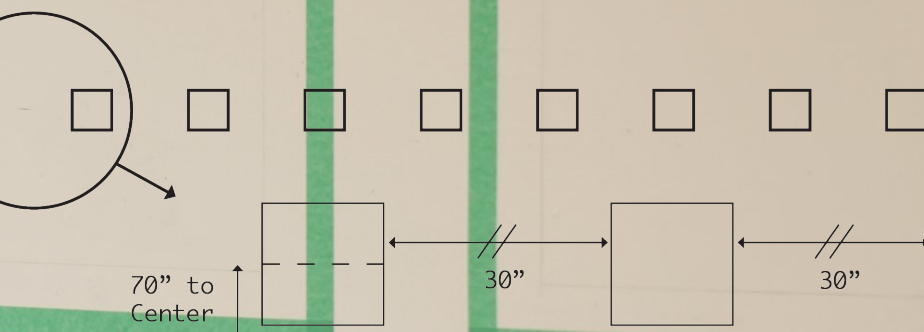
material for substrate\*. Material should be wood and at least 1/2 inch thick. A board can be cut to use as the substrate, though a cradled panel is preferred for sculptural depth. Each panel should be 10 inches square, however, an 8 inch square could work depending on the material available.

surface by making sure it is completely smooth. Sand with fine grit sandpaper if necessary. Be sure all surfaces are free of dust and grit. Add a coat of primer around the sides of the board to ensure a clean edge when painting.

paint. Mix equal parts of "Brown" acrylic paint, Acrylic Gloss Medium, and water. Add paint mixture to a roller tray and apply with a foam roller.

Apply paint in 5 thin layers allowing at least one hour between applications for drying. If the paint is applied too thick and the surface gets too textured, sand and apply additional applications.

Leave space for installation. Be sure the wall is large enough to allow for the dimensions pictured below. Hang the pieces 30 inches apart from each other (at least 30 inches from the left and right of the piece) at a 70 inch center height from the floor to the center of the piece). If the wall does not accommodate the space, proportionally adjust the dimensions.

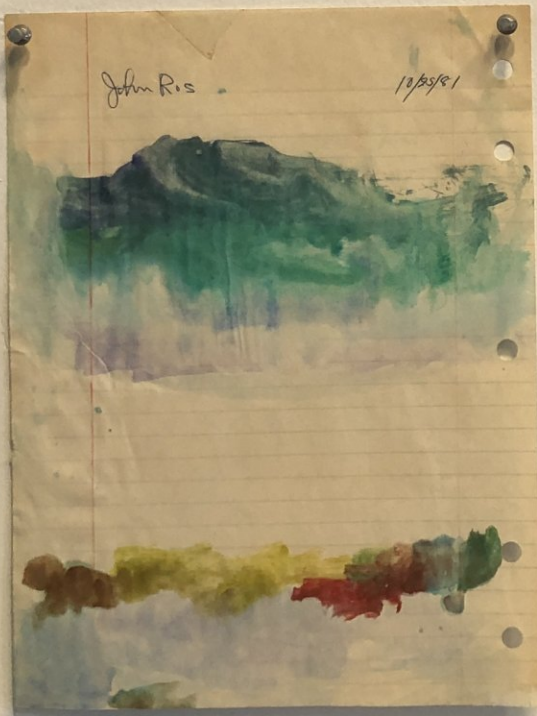
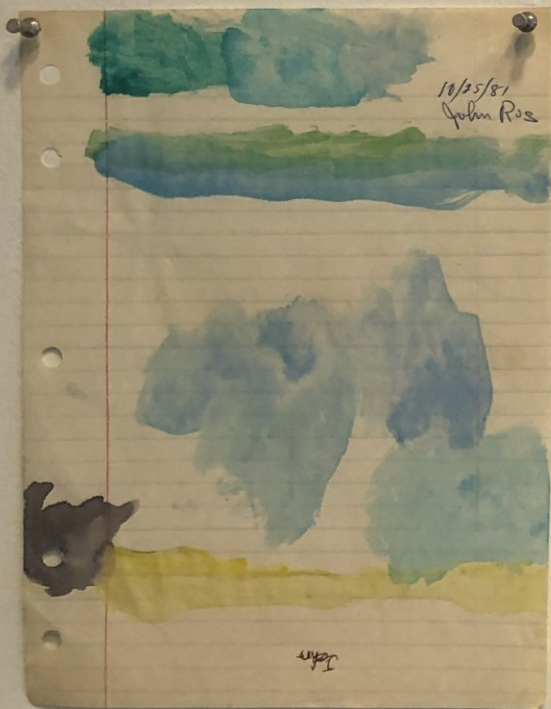


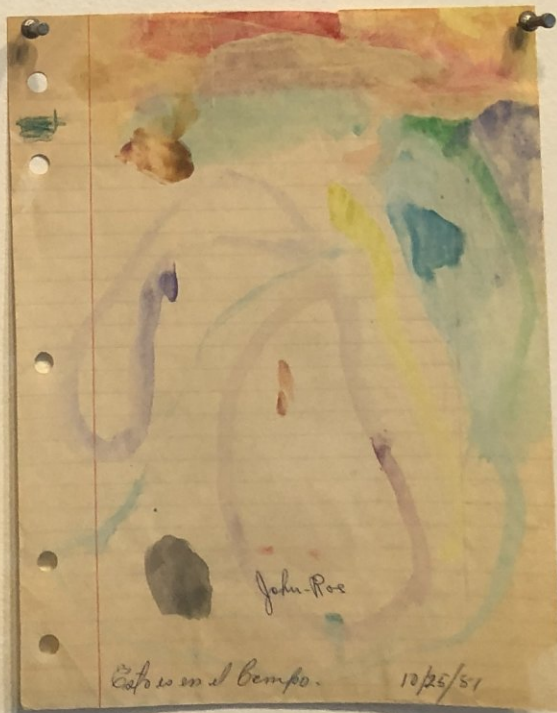
Copy this silk screen and make it available for visitors to collect. A photographic transfer (if you wish to make your own screen print) or a copy can be obtained at: [johnros.com/storage/instruction001.pdf](http://johnros.com/storage/instruction001.pdf). Print on 11 inch newsprint with black acrylic ink.

Source for substrate: <http://www.art-boards.com/MCPriceList.html>

SECONDS is a special program offered by Golden Artist Colors. More information can be found at: <http://www.goldenpaints.com/company/seconds.php>





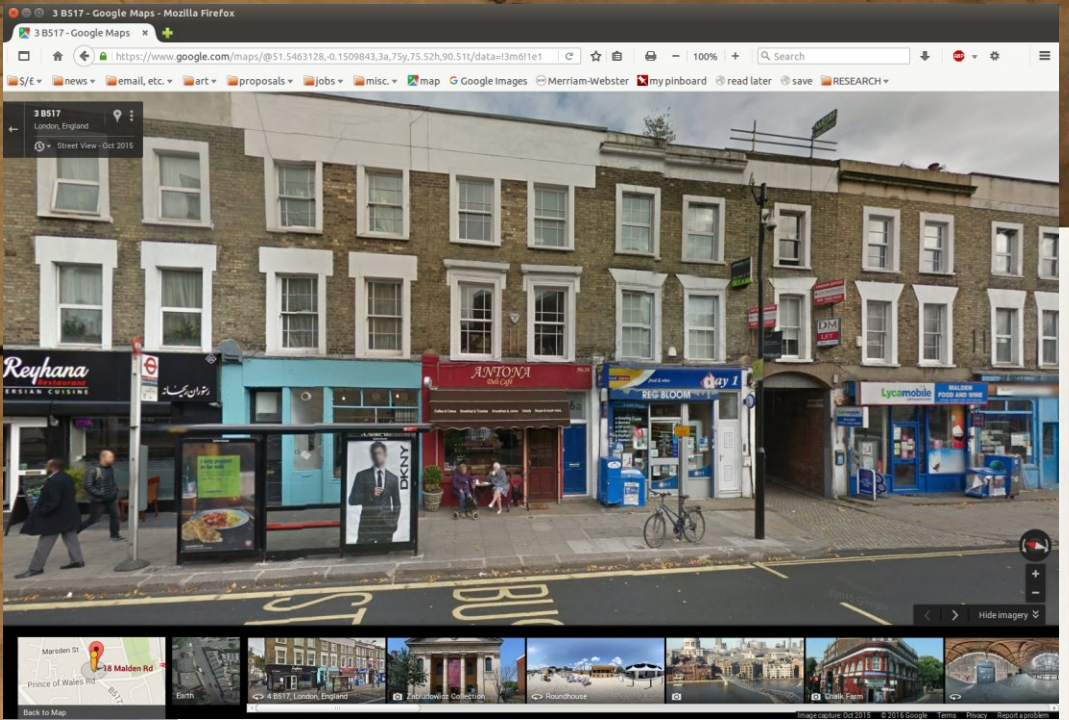




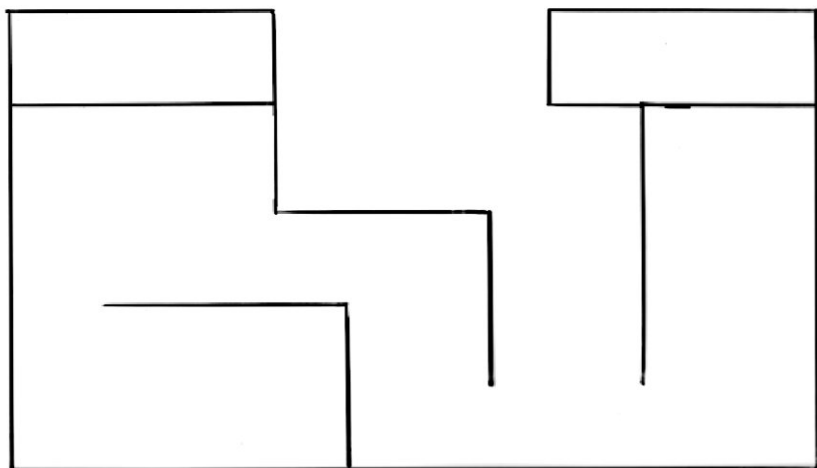
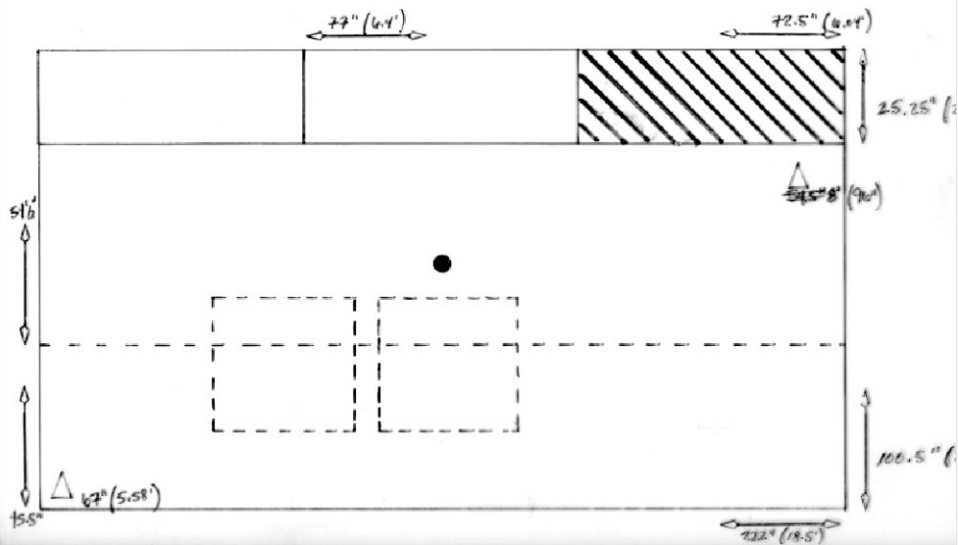




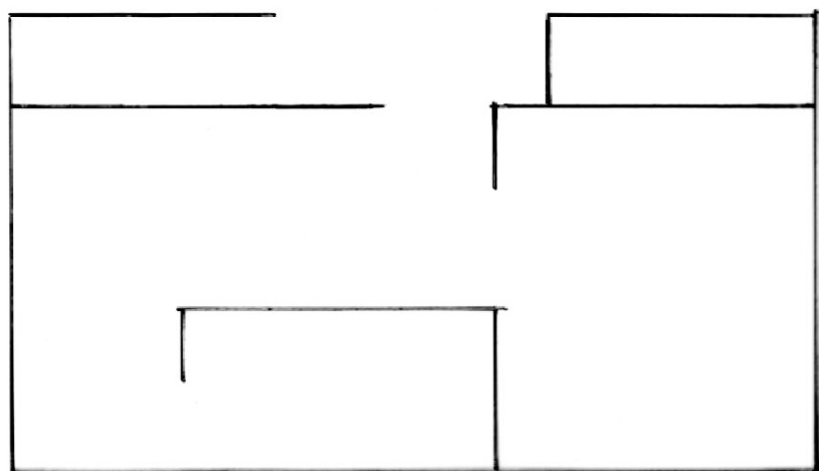
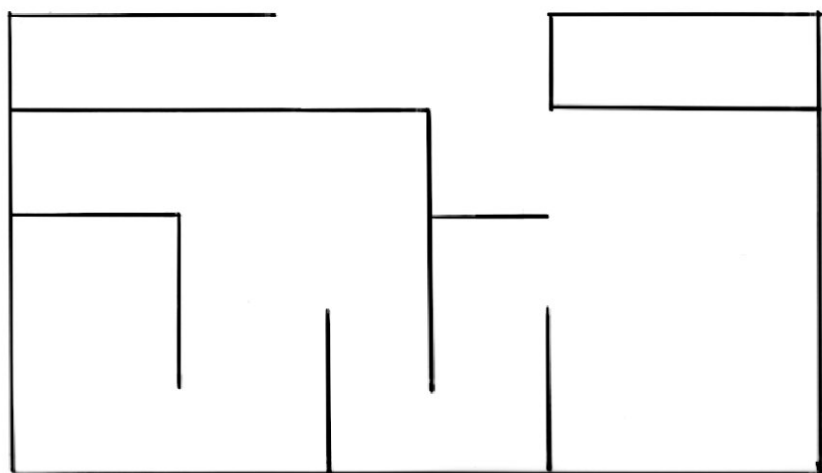












Concentricity.

01. Source material for substrate\*. Material should be in depth. A board can be cut to use as the substrate preferred for sculptural depth. Each panel should be 12 inch square could work depending on the material.



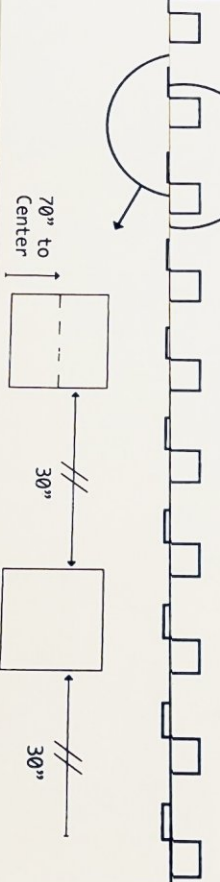
TM2224  
www.alvinco.com

06. Photocopy this silk screen and make it available for visitors to collect. A template for photographic transfer (if you wish to make your own screen print), projection, or printout can be obtained at: [johnros.com/storage/instruction001.pdf](http://johnros.com/storage/instruction001.pdf).  
Print on 14 x 11 inch newsprint with black acrylic ink.

\*One possible source for substrate: <http://www.goldenseconds.com/instruction001.pdf>.

\*\*Point from GOLDEN SECONDS, a special program offered by Golden Artist Colors. More information can be found at: <http://www.goldenpaints.com/company/seconds.php>

John ros, october 2012





be wood and at least 1/2 inch  
thick, though a cradled panel is  
10 inches square, however, an 8

### Concentricity.

01. Source material for substrate\*. Material should be wood and at least 1/2 inch in depth. A board can be cut to use as the substrate, though a cradled panel is preferred for sculptural depth. Each panel should be 10 inches square, however, an 8

02. Prepare surface by making sure it is completely smooth. Sand with fine grit sandpaper if necessary. Be sure all surfaces are free of dust and grit. Add

03. Prepare paint. Mix 2 parts Brown\* acrylic paint, 1 part Acrylic Gloss Medium, and 1 part water. Add paint mixture to a roller tray and apply with a foam roller.

04. Apply paint in 5 thin layers allowing at least one hour between applications for proper drying. If the paint is applied too thick and the surface gets too textured, sand between applications.

05. Prepare space for installation. Be sure the wall is large enough to allow for proper dimensions pictured below. Hang the pieces 30 inches apart from each other (with at least 30 inches from the left and right of the piece) at a 70 inch center line (from the floor to the center of the piece). If the wall does not accommodate for this much space, proportionally adjust the dimensions.



